



MADE IN  
**SUPERIOR**  
IN EVERY WAY  
SOUTH AFRICA



## GENESIS STYLE



Triple stitching  
on shoulder,  
armhole & yoke



Double chest pockets  
with overlap press stud  
& pen pocket



Concealed  
"hide-a-way"  
pocket at  
inside chest



Front jacket  
waist "2-way"  
pockets



Side vents  
for extra  
comfort



Premium SAB5  
YKK 2-colour  
vislon zipper



5 pocket pants



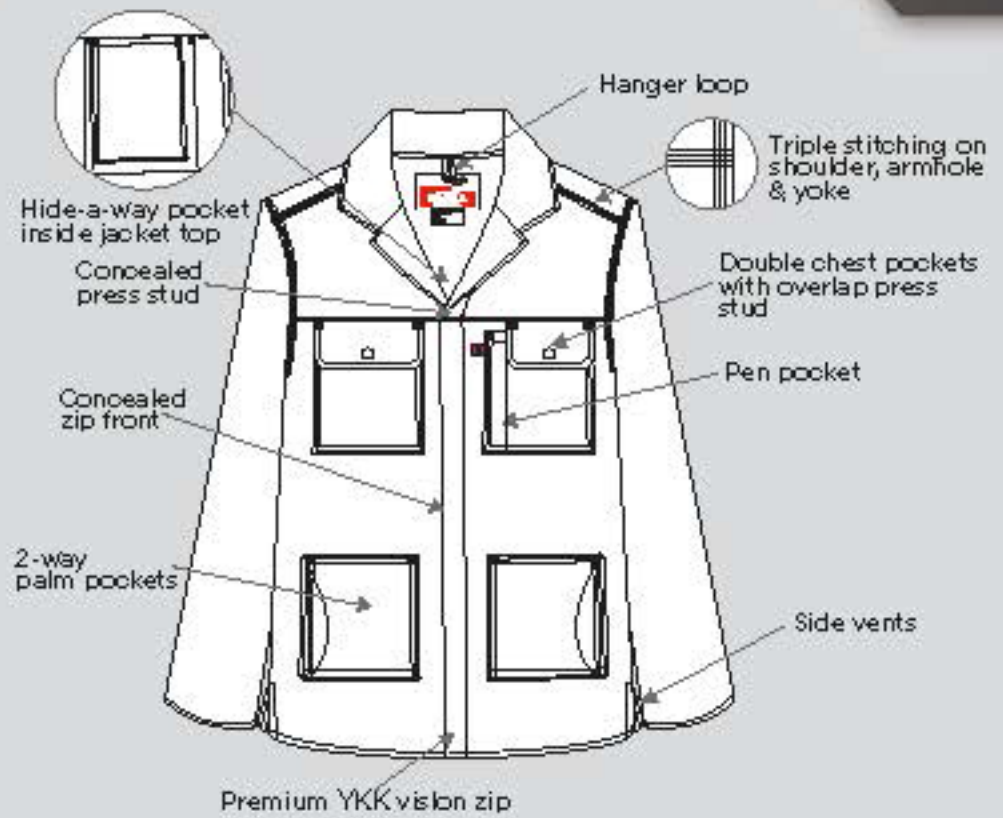
Triple stitching  
on inner leg



Navy | Emerald | Grey | Black

65/35 POLYCOTTON





**MAMMOTH WORKWEAR** is proud to introduce the fantastic new "Genesis" style of workwear.

Manufactured in South Africa, the **Genesis** overall boasts more features than any other polycotton conti currently available in the workplace. Unique '2-way palm pockets', a secret 'hide-a-way pocket' and '5 pocket' trousers are just three of the innovative new styling features of the **Genesis** garment. **Premium YKK vislon zips, triple stitching** and a **generous cut**, come standard in every garment.

Our **65/35 polycotton** garments are constructed using a **high quality 240gm fabric** which ensures greater strength, better performance and durability. Other fabric options in the **Genesis** range include **J54 SABS approved 100% cotton, stone washed denim, flame retardant** and **acid resistant fabric**.

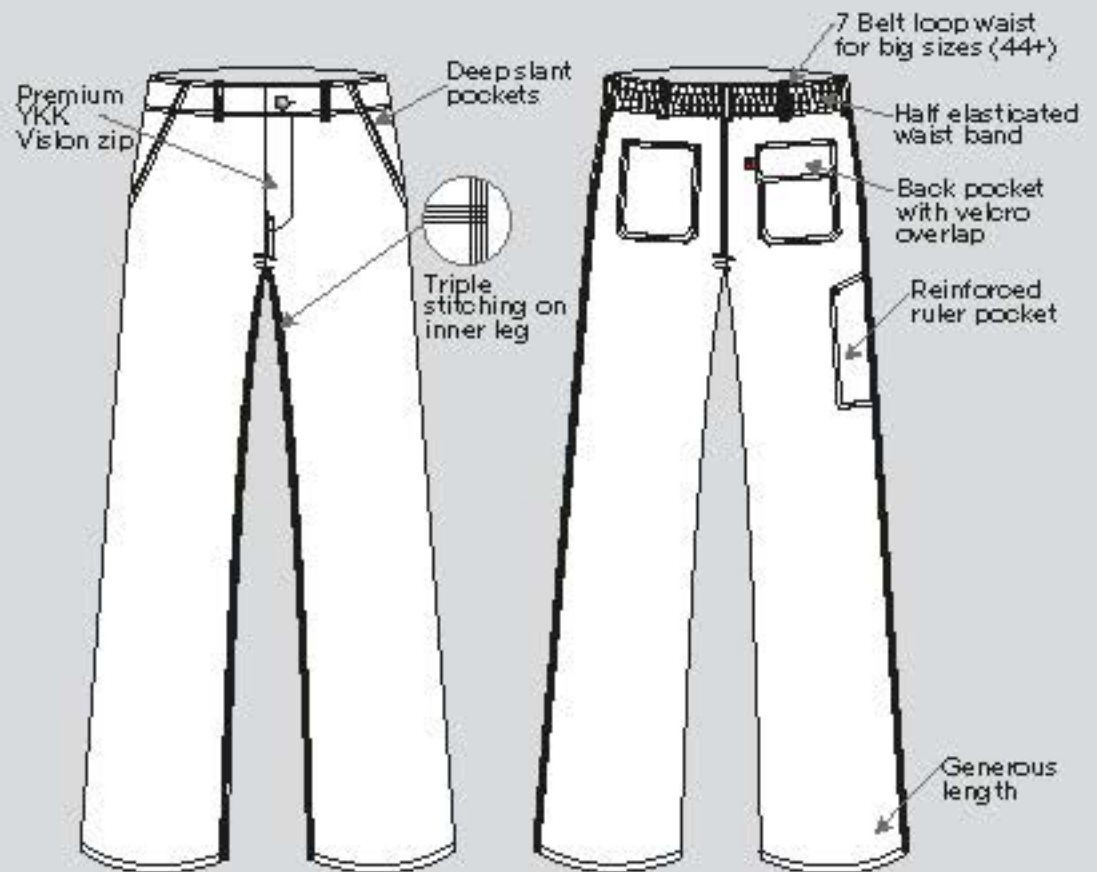
**Genesis** overalls are sold as separates - jackets and trousers are sold individually to allow for a custom fit. This allows for greater flexibility and comfort for the wearer.

MAKE THE MOVE TO **MAMMOTH GENESIS** TODAY - *SUPERIOR IN EVERY WAY!*

65/35 POLYCOTTON



CONSTRUCTED IN SOUTH AFRICA



## MAMMOTH SIZE CHART

CONTI JACKETS																		
ALPHA	XS		S		M		L		XL		2XL		3XL		4XL		5XL	
CHEST IN INCHES	28"	30"	32"	34"	36"	38"	40"	42"	44"	46"	48"	50"	52"	54"	56"	58"	60"	62"
CHEST IN CM	72	77	82	87	92	97	102	107	112	117	122	127	132	137	142	147	152	157
CONTI TROUSERS																		
WAIST IN INCHES	28"	30"	32"	34"	36"	38"	40"	42"	44"	46"	48"	50"	52"	54"	56"	58"		
WAIST IN CM	72	77	82	87	92	97	102	107	112	117	122	127	132	137	142	147		

THE FOLLOWING SIZE GRID SHOWS ACTUAL BODY MEASUREMENTS - NOT GARMENT MEASUREMENTS  
USE BODY MEASUREMENT INDICATED AND ORDER THE CORRESPONDING SIZE FROM THE GRID